

Community School Structures



National Center
for
COMMUNITY SCHOOLS



The Children's Aid Society

**Janice Chu-Zhu,
Senior Director, National Capacity Building**

Objectives of This Session

- ◆ Explore district and agency governance structures in community school Initiatives around the country.
- ◆ Identify the essential structures and supports in a community school.
- ◆ Learn about the three tiers of governance in a community school initiative.
- ◆ Begin assessing alignment issues and opportunities at your schools.

CS Initiatives around the country

- ◆ Kent County Coordinating Council
- ◆ Oakland Unified School District Regional Governance Advisory Council
- ◆ SUN (Multnomah County) Coordinating Council
- ◆ TASCI (Tulsa, OK) Governance Structure
- ◆ Hartford
- ◆ Cincinnati

Systemic Community Schools Initiative Structure

Leadership Team

- Shared Vision
- Policy Alignment
- Resource Development

Mayor/County Executive, District Superintendent, City/County Agency Directors, Major Donors, Lead Agency Executives, Business Partners

Capacity Building

Mid-Level Management Team

- Partner Coordination
- Protocol Development
- Data Sharing & Analysis

City/County Agency Managers, District Ass't Superintendents, Site Supervisors, Program & Service Provider Managers

School-Based Teams

- Needs Assessment
- Implementation
- Outcomes

Principal, Assistant Principal, Community School Coordinator, Teachers, Providers, Parents, Community Members

Evaluation

What is your School Services Network?

Leadership Team

- Shared Vision
- Policy Alignment
- Resource Development

Technical Assistance

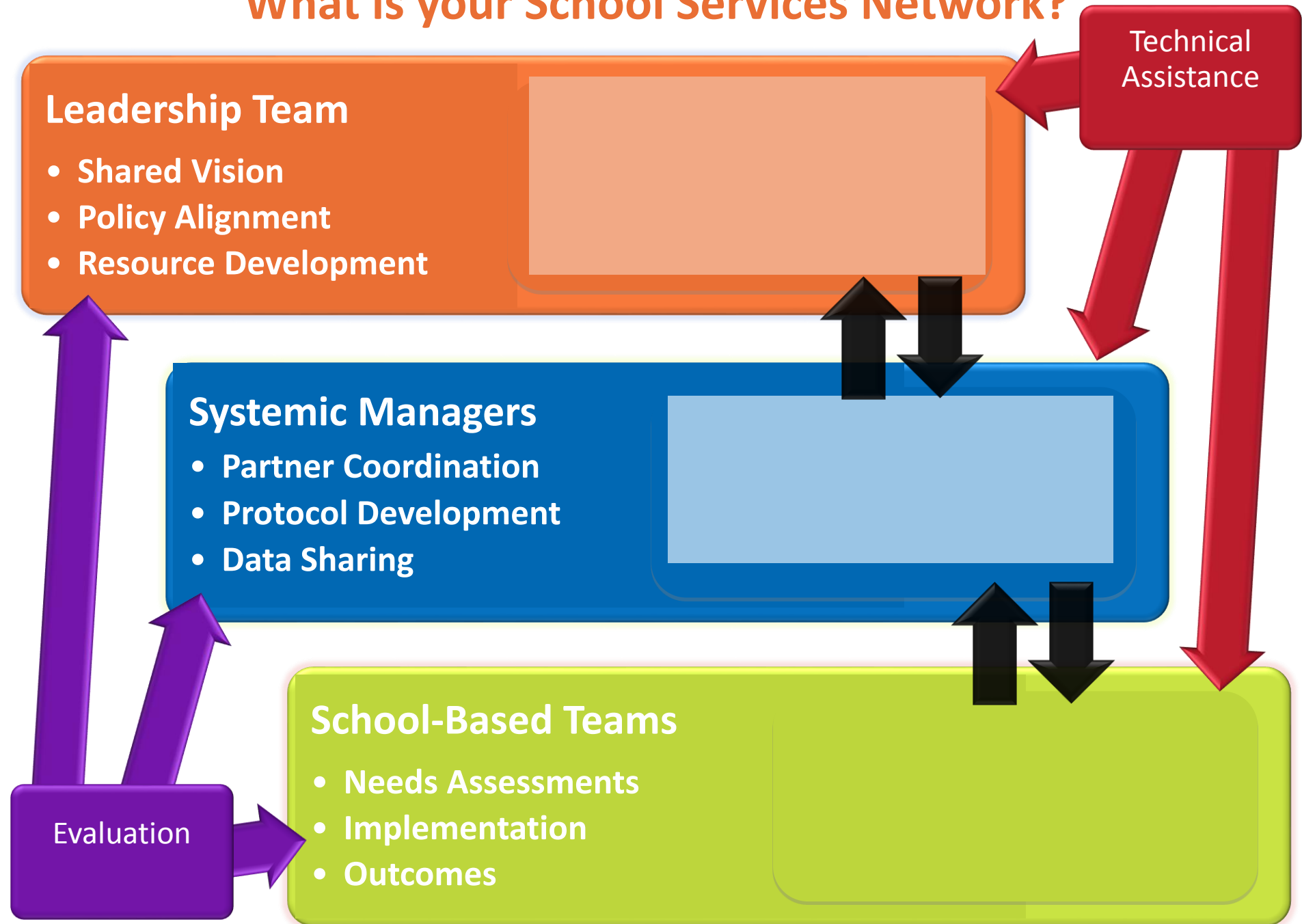
Systemic Managers

- Partner Coordination
- Protocol Development
- Data Sharing

School-Based Teams

- Needs Assessments
- Implementation
- Outcomes

Evaluation



Role of a Lead Agency in a CS

- ◆ Lead Agency partners in a Community School Approach and Concepts:
 - ❖ Lead Agency as a central stakeholder in the educational, physical, and social planning for our schools.
 - ❖ manages/organizes/coordinates the work around enrichment and non academic barriers.
 - ❖ coordinates all programs and services in our community schools
 - ❖ Lead Agency strong working partnership that allows for the functioning as a team with a common goal: to better serve the needs of each student and family.
 - ❖ Lead Agency as the organization that LA as the organization that consistently promotes the need for an integrated approach independently of who is funding specific programs.



National Center
for
COMMUNITY SCHOOLS

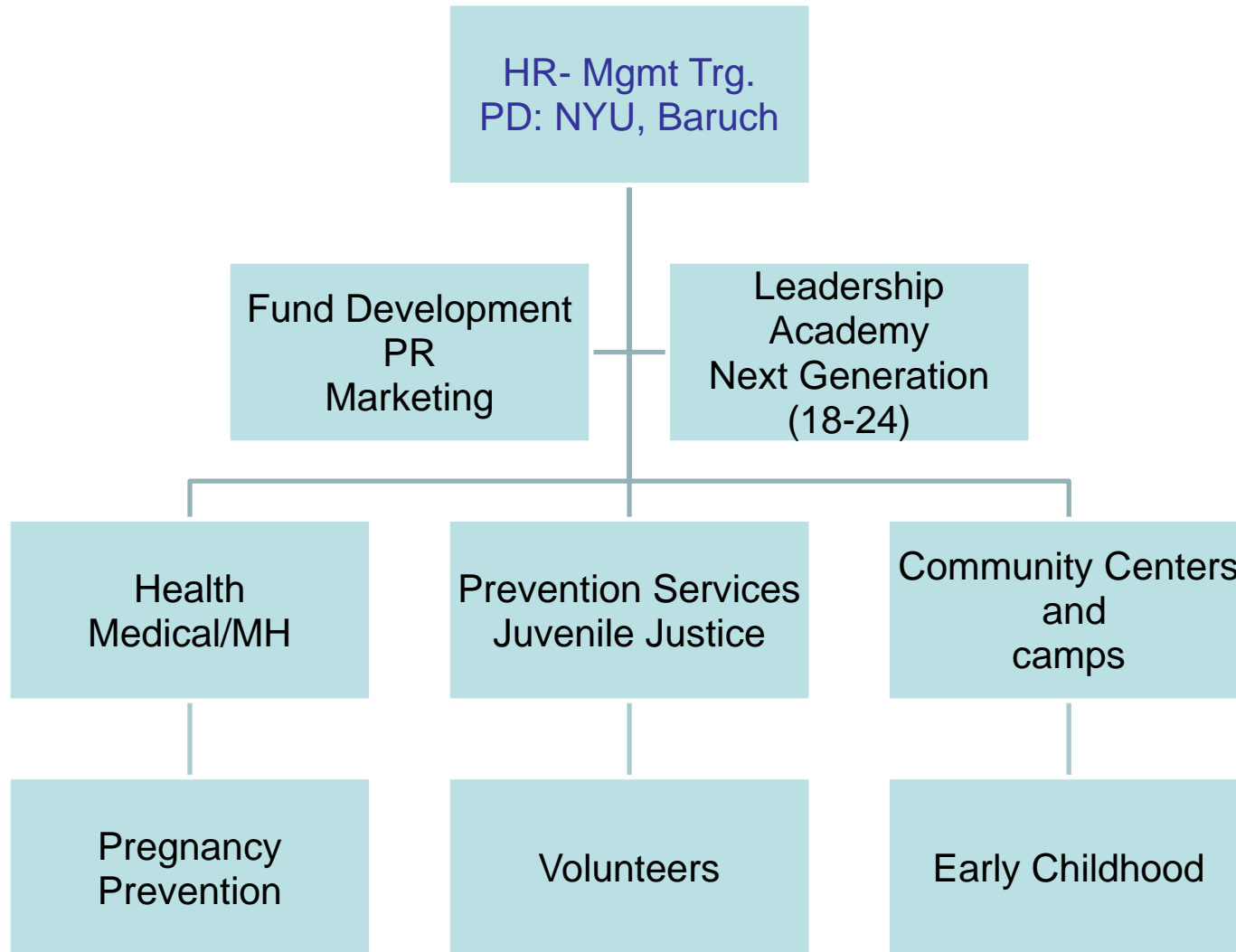
How do you define support?



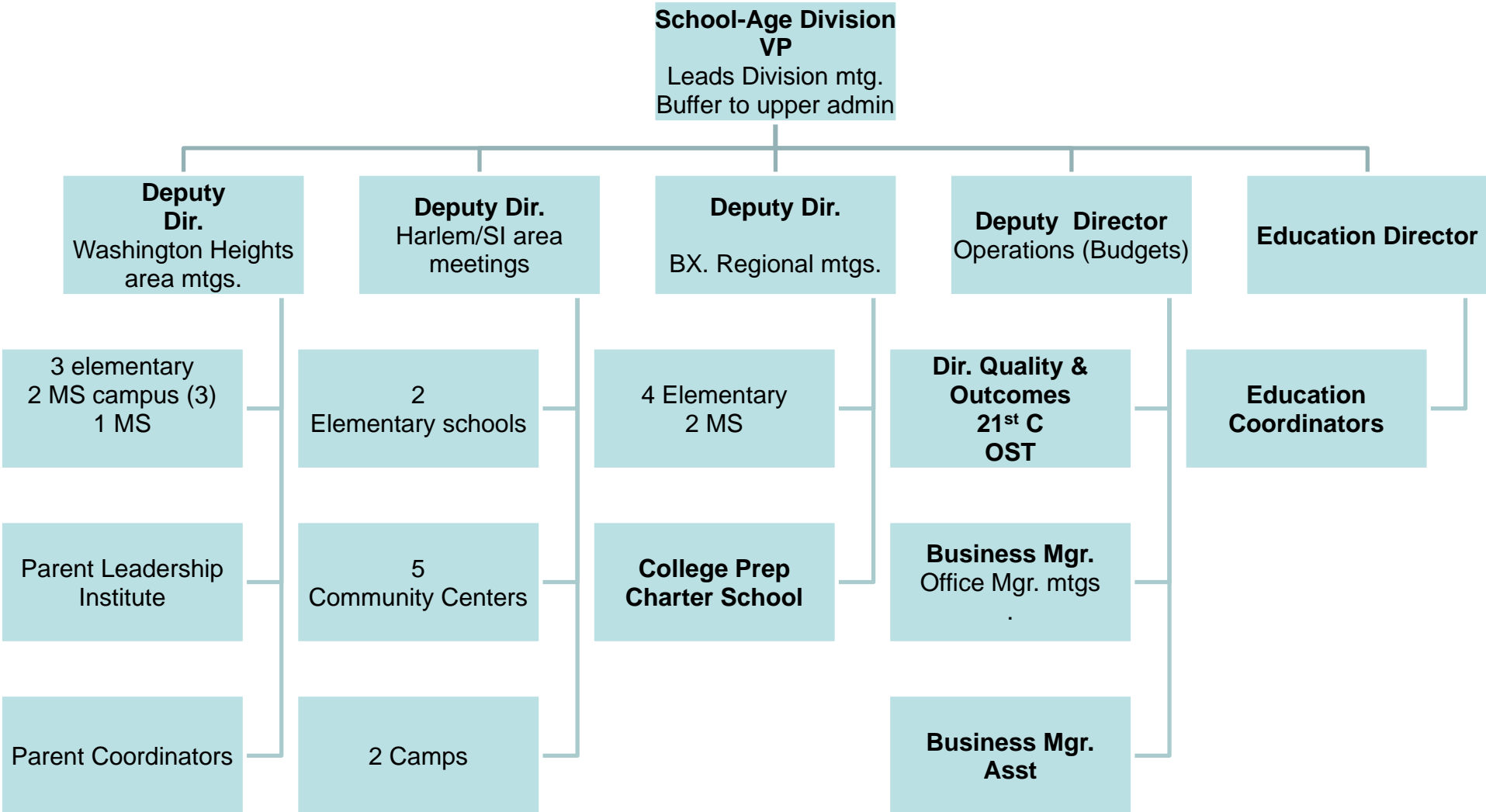
Defining Support in a CS

- Facilitate dialogue with CS Coordinator, aid in speaking with principal.
- Assist in budget negotiations and meetings with principal
- Negotiating for space
- Providing PD for teachers and staff
- Working with other partners providers in the building (SES, specialists, community partners)

CAS Centralized Supports



Division Supports

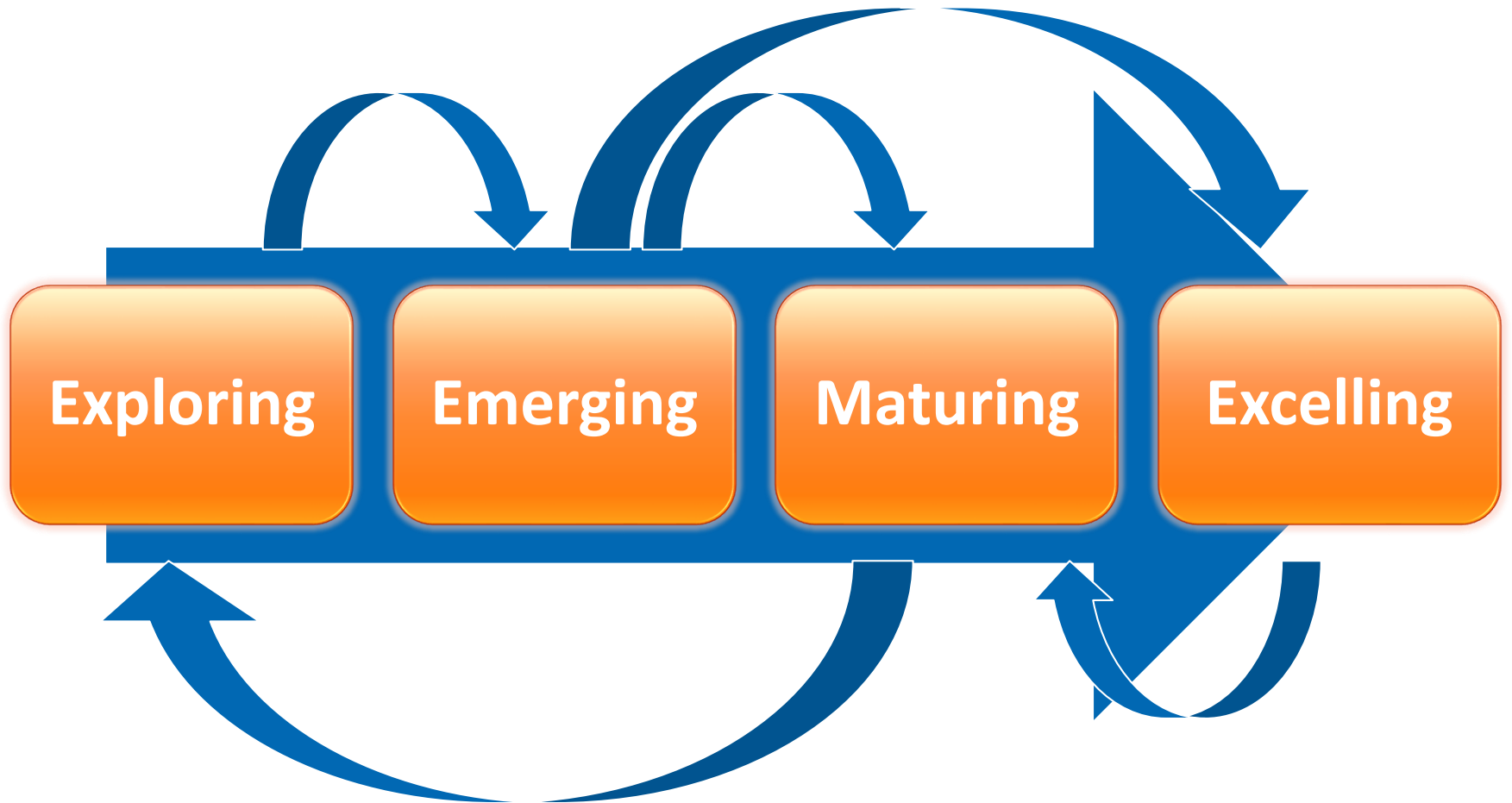


Partner Supports

- **School**
 - In-kind: Space, security, resources (paper, printers, phones, walkie-talkies, etc.)
 - Cost Sharing-grants, etc.
 - Staff (work with custodians, provide translators for teachers, assist with events by providing staff)
 - Partnership with other CBOs
- **Community**
 - Jobs
 - Leveraging services and resources through collaborations (e.g. workshops, health fair materials)
 - Specialists: arts, dance

Moving to the Next Stage

Stages of Development in a Community School



Key components of a CS

- ◆ Education
- ◆ Programs & Services
- ◆ Management & Governance
- ◆ Staffing
- ◆ Parent Engagement
- ◆ Community Involvement
- ◆ Evaluation
- ◆ Sustainability

Moving to the Next Stage

- ◆ Meetings—with whom?
- ◆ Advisory Council
- ◆ Summer retreat
- ◆ Staff development
- ◆ Partnerships
- ◆ Other strategies for working with teachers
- ◆ Resources

**Moving Toward
Coordination
&
Integration**

Strategies for Working with Teachers

- ◆ Teacher orientation at the start of each year
- ◆ Focus groups with teachers on student needs
- ◆ Individual meetings with teachers
- ◆ Mental health consultation with teachers (can include classroom management observations)
- ◆ Teacher professional development (e.g., ages and stages of child development; home-school connection)

More Strategies for Engaging Teachers

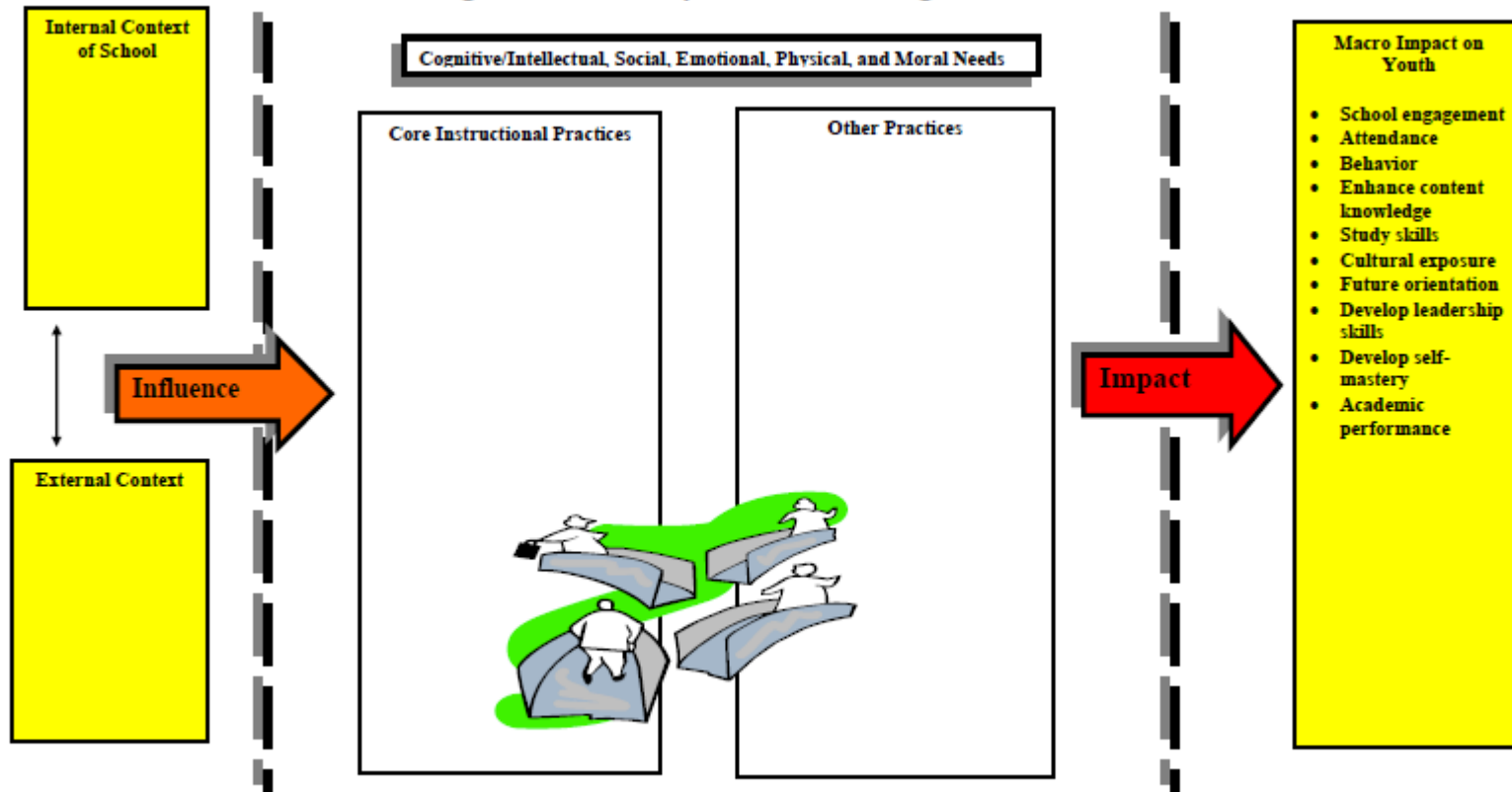
- ◆ Teacher recognition events
- ◆ Outreach to and relationship-building with union chapter leader in your school
- ◆ Using common core standards to integrate OST with core instructional program
- ◆ Being a good partner in sharing space
- ◆ Hiring teachers in OST programs (ed. coord.)
- ◆ Attending grade-level and staff meetings

Integration Activity

Activity	Co-Location	Integration
Parent Engagement Activities/Events	Separate events for school and after-school	Joint planning and design with Parents, veteran parents deliver the Orientation Night
Black/Latino History Celebrations	Separate events sponsored by school and CBO	

Alignment

Linking the School Day with other Programs and Services





National Center

for

COMMUNITY SCHOOLS

Consultation ♦ Advocacy ♦ Innovation



The Children's Aid Society

nationalcenterforcommunityschools.org