



COLLABORATE WITH PEERS TO TACKLE SYSTEM-WIDE CHALLENGES

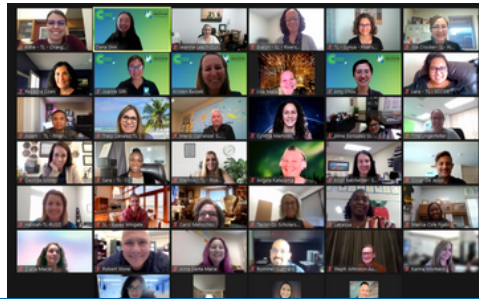
A FREE, virtual opportunity to connect as a Community of Practice

- WHO:** Educational leaders from Imperial, San Diego, Riverside, Orange, and San Bernardino Counties
- WHY:** Develop a shared practice with role-alike colleagues and cultivate a collective sense of identity as equity-centered practitioners
- WHEN:** For District Leaders: September 14, October 12, November 9, & December 7
For Site Leaders: September 15, October 13, November 10, & December 8
For Teacher Leaders: September 15, October 13, November 10, & December 8
All sessions take place from 1 - 4 p.m.



**PARTICIPANTS WILL
WALK AWAY WITH**

- New strategies to address racial inequities
- New thought-partnership networks



SIGN UP TODAY AT [BIT.LY/21CSLACOP2](https://bit.ly/21CSLACOP2)

21CSLA is a statewide network to support equity-centered leadership across schools so that all students thrive. Offerings include practical professional learning, communities of practice, and leadership coaching.

INTERESTED IN HEARING MORE? EMAIL [CORE@LAEP.ORG](mailto:core@laep.org)

OR VISIT OUR WEBSITE AT [LAEP.ORG/21CSLA](https://laep.org/21CSLA)